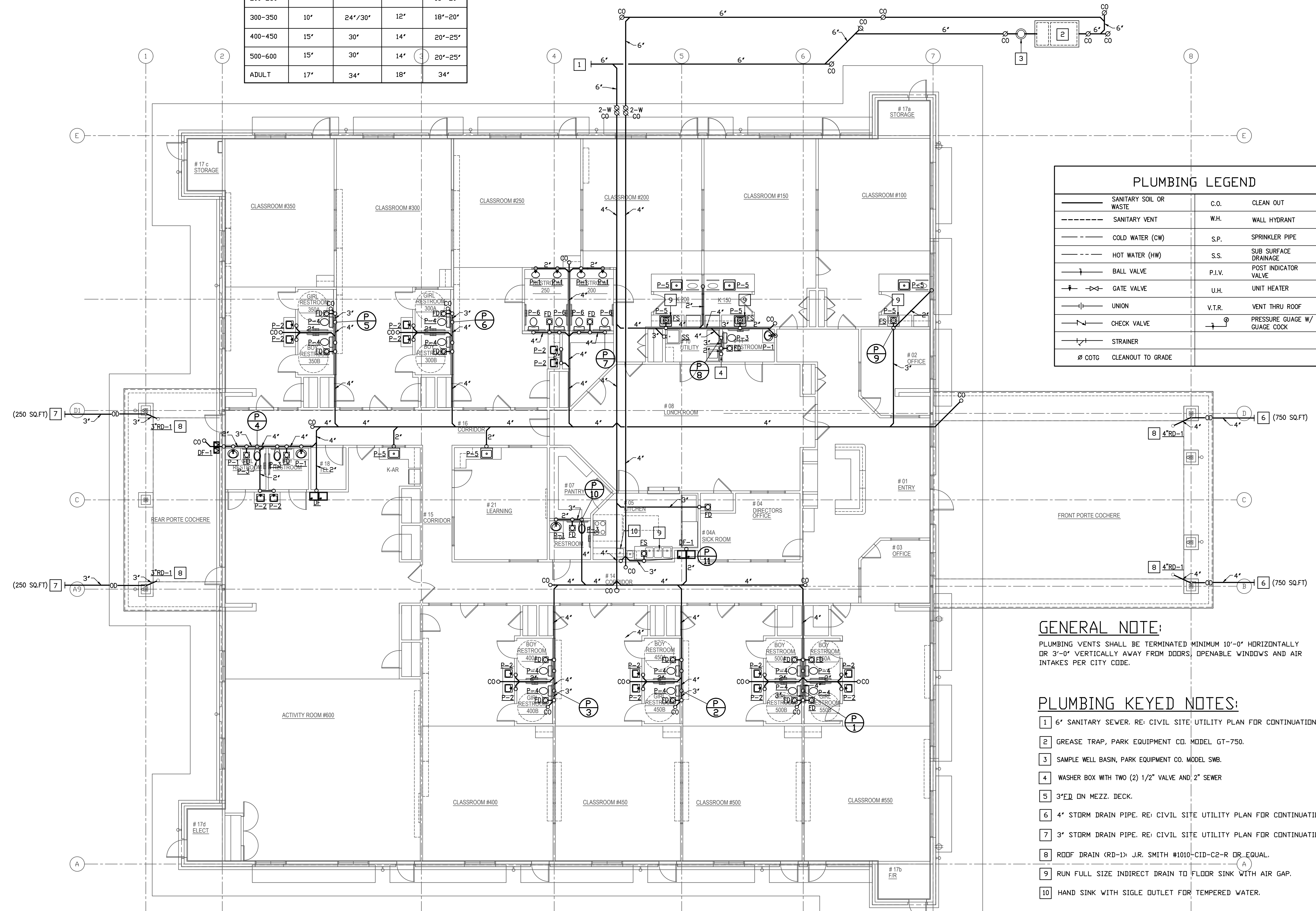


REVISIONS AND ISSUANCE		
NO.	DATE	DESCRIPTION
04/17/2019		PRICING ONLY
06/07/2019		ISSUE FOR PERMIT

WATER CLOSET / LAV / GRAB BAR MOUNTING HT CHART				
ROOM	WC HEIGHT	LAV HEIGHT	WC CL. TO SIDE WALL	GRAB BAR HEIGHT
200-250	10'	24"	12"	18'-20"
300-350	10'	24'/30"	12"	18'-20"
400-450	15'	30"	14"	20'-25"
500-600	15'	30"	14"	20'-25"
ADULT	17'	34"	18"	34"

PLUMBING LEGEND		
	SANITARY SOIL OR WASTE	C.O. CLEAN OUT
	SANITARY VENT	W.H. WALL HYDRANT
	COLD WATER (CW)	S.P. SPRINKLER PIPE
	HOT WATER (HW)	S.S. SUB SURFACE DRAINAGE
	BALL VALVE	P.I.V. POST INDICATOR VALVE
	GATE VALVE	U.H. UNIT HEATER
	UNION	V.T.R. VENT THRU ROOF
	CHECK VALVE	P.P.G. PRESSURE GAUGE W/ GAUGE COCK
	STRAINER	
	Ø COTG CLEANOUT TO GRADE	



**GENERAL NOTE:**  
 PLUMBING VENTS SHALL BE TERMINATED MINIMUM 10'-0" HORIZONTALLY OR 3'-0" VERTICALLY AWAY FROM DOORS, OPENABLE WINDOWS AND AIR INTAKES PER CITY CODE.

- PLUMBING KEYED NOTES:**
- 6" SANITARY SEWER. RE: CIVIL SITE UTILITY PLAN FOR CONTINUATION.
  - GREASE TRAP, PARK EQUIPMENT CO. MODEL GT-750.
  - SAMPLE WELL BASIN, PARK EQUIPMENT CO. MODEL SWB.
  - WASHER BOX WITH TWO (2) 1/2" VALVE AND 2" SEWER
  - 3" ED ON MEZZ. DECK.
  - 4" STORM DRAIN PIPE. RE: CIVIL SITE UTILITY PLAN FOR CONTINUATION.
  - 3" STORM DRAIN PIPE. RE: CIVIL SITE UTILITY PLAN FOR CONTINUATION.
  - RDDF DRAIN (RD-1) J.R. SMITH #1010-CID-C2-R DR EQUAL.
  - RUN FULL SIZE INDIRECT DRAIN TO FLOOR SINK WITH AIR GAP.
  - HAND SINK WITH SIGLE OUTLET FOR TEMPERED WATER.

**1 PLUMBING FLOOR PLAN - WASTE**  
 1/8" = 1'-0"

**IVY KIDS EARLY LEARNING CENTER**  
 LOT COM2I  
 CROSS CREEK RANCH  
 6407 CROSS CREEK BEND LANE  
 FULSHEAR, TX 77441

MEP Consultants  
 BLK Engineering & Consulting Co.  
 3423 Spring Arbor Ln.  
 Sugar Land, TX 77479  
 (t) 832 563 3127  
 TBPE Firm #12672



DRAWING TITLE  
**PLUMBING FLOOR PLAN - WASTE**

DRAWN BY FK	CHECKED BY CK
DATE 04/10/2019	JOB NO. FULSHEAR
DRAWING NO. <b>P-1.0</b>	