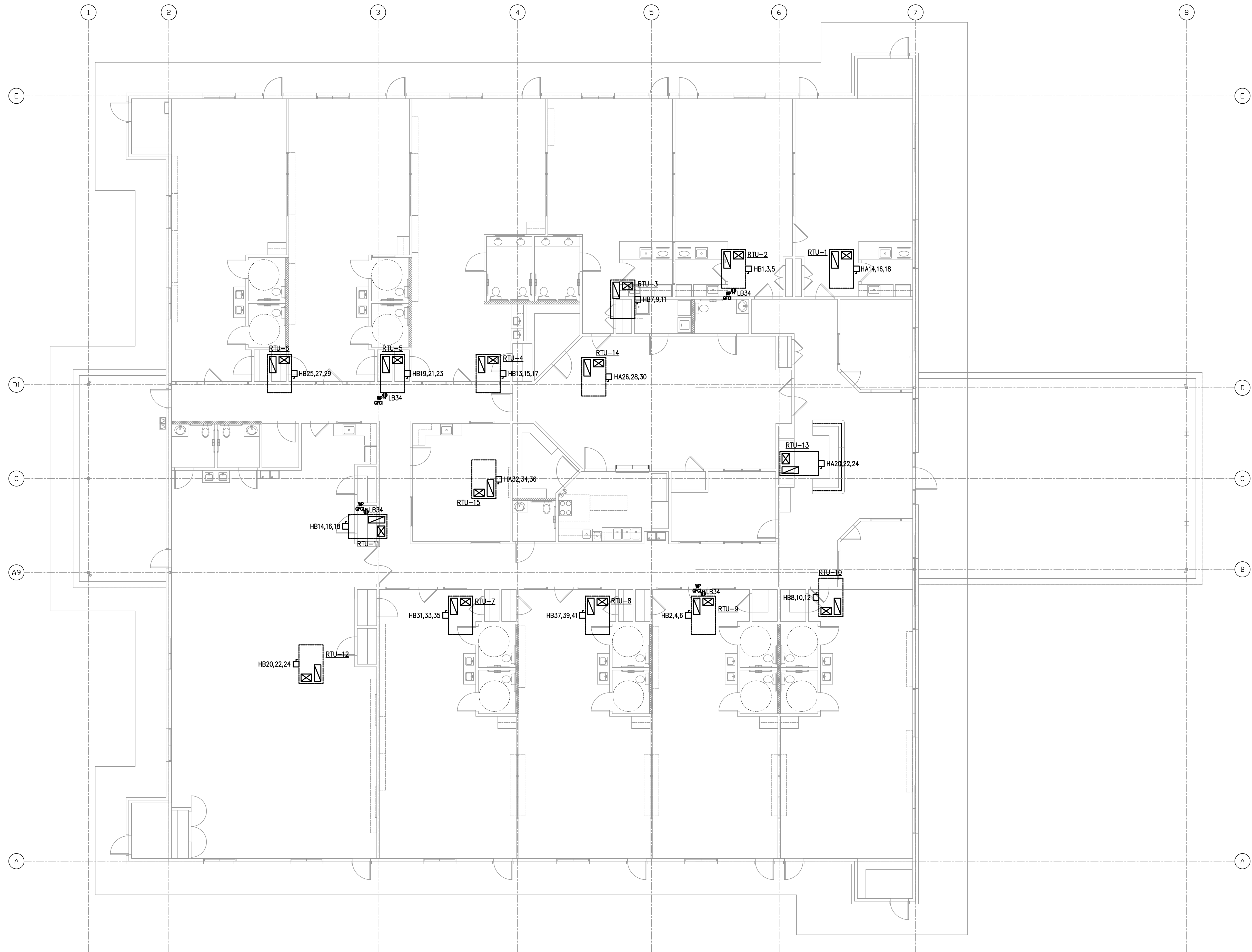


GENERAL NOTES

- REFER TO E4.0 FOR ONE LINE DIAGRAM AND E5.0 FOR PANEL SCHEDULES. REFER TO E7.0 FOR SPECIFICATIONS, NOTES, LIGHTING SCHEDULE, AND SYMBOLS.
- SUBSCRIPT INDICATES CIRCUIT NUMBER, IE:
 HA3 HA3 INDICATES CIRCUIT NO. 3 PANEL HA
 HB3 HB3 INDICATES CIRCUIT NO. 3 PANEL HB
 LB3 LB3 INDICATES CIRCUIT NO. 3 PANEL LB
- PROVIDE 30/3/NF NEMA 3R SAFETY SWITCHES ON 3-TON, 4-TON, & 5-TON RTU'S.



1 HVAC POWER PLAN
 1/8" = 1'-0"

REVISIONS AND ISSUANCE		
NO.	DATE	DESCRIPTION
1	04/01/2019	ARC PHASE 1

IVY KIDS EARLY LEARNING CENTER
 LOT COM2I
 CROSS CREEK RANCH
 6407 CROSS CREEK BEND LANE
 FULSHEAR, TX 77441

MEP Consultants
 BLK Engineering & Consulting Co.
 3423 Spring Arbor Ln.
 Sugar Land, TX 77479
 (t) 832 563 3127
 TBPE Firm #12672



DRAWING TITLE
HVAC POWER PLAN

DRAWN BY FK	CHECKED BY CK
DATE 04/17/2019	JOB NO. FULSHEAR
DRAWING NO. E-3.1	