

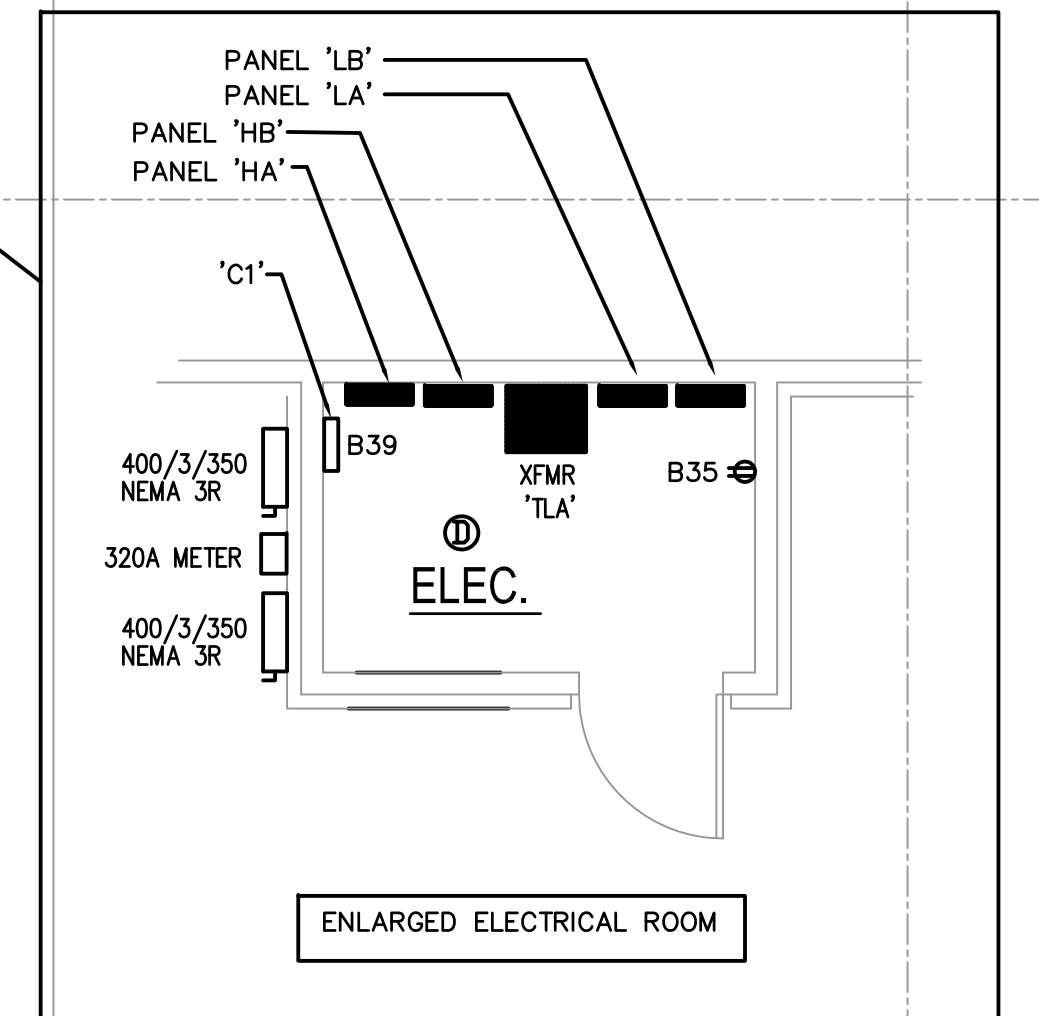
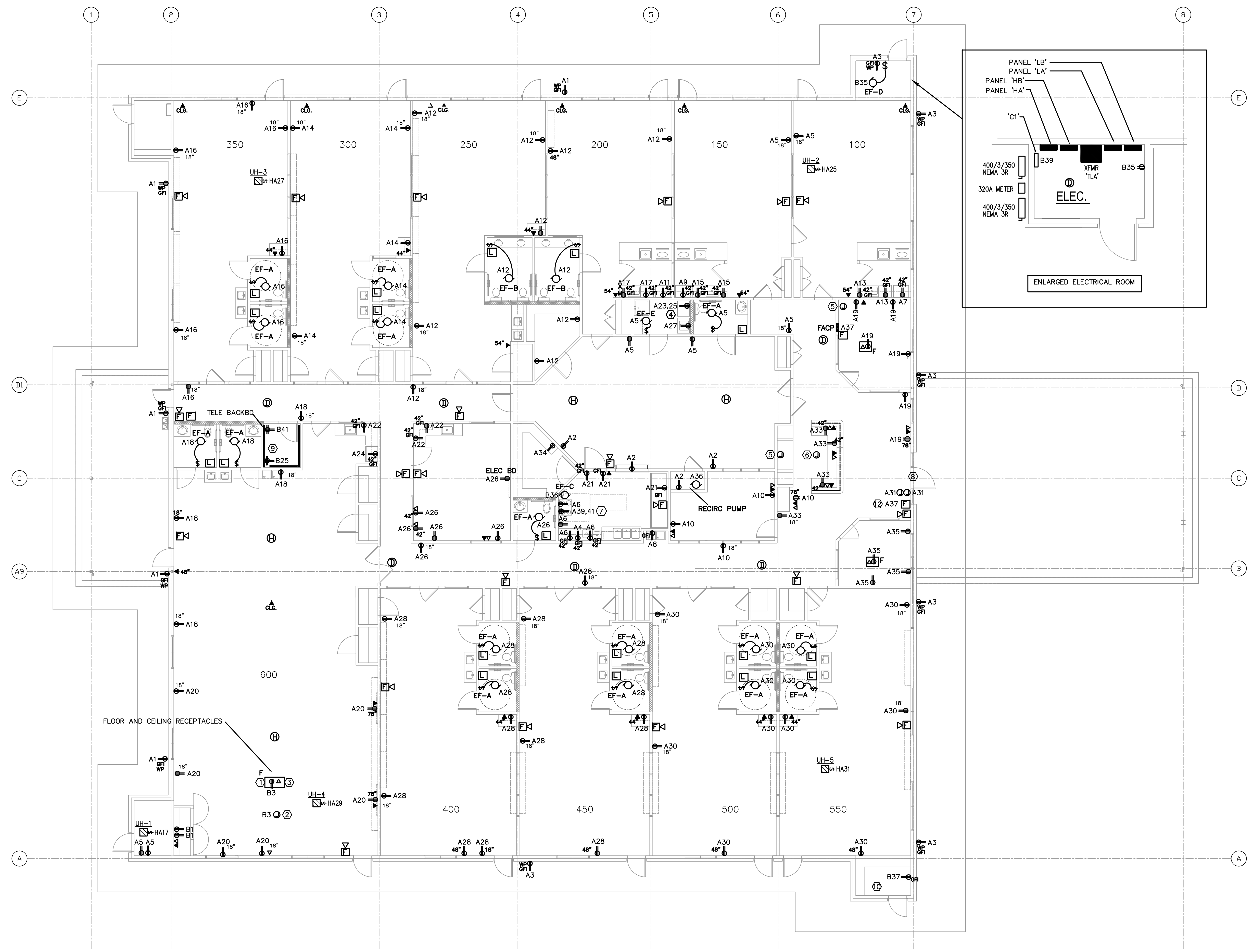
GENERAL NOTES

- REFER TO E4.0 FOR ONE LINE DIAGRAM AND E5.0 FOR PANEL SCHEDULES. REFER TO E7.0 FOR SPECIFICATIONS, NOTES, LIGHTING SCHEDULE, AND SYMBOLS.
- SUBSCRIPT INDICATES CIRCUIT NUMBER, IE:
 A3 A3 INDICATES CIRCUIT NO. 3 PANEL 'LA'
 B3 INDICATES CIRCUIT NO. 3 PANEL 'LB'
 HA3 INDICATES CIRCUIT NO. 3 PANEL 'HA'
- COORDINATE THE INSTALLATION OF THE ELECTRICAL POWER TO THE KITCHEN EQUIPMENT WITH THE ACTUAL EQUIPMENT BEING INSTALLED. PROVIDE CIRCUIT BREAKERS, BRANCH CIRCUIT CONDUCTORS, J-BOXES, RECEPTACLES AND DISCONNECT SWITCHES AS REQUIRED BY THE EQUIPMENT INSTALLATION REQUIREMENTS AND THE NEC.
- PROVIDE GFCI TYPE RECEPTACLES OR CIRCUIT BREAKERS FOR ALL 120V RECEPTACLES IN THE KITCHEN PER THE NEC. COORDINATE RECEPTACLE MOUNTING HEIGHT WITH THE EQUIPMENT BEING INSTALLED.
- PROVIDE LISTED TAMPER-RESISTANT RECEPTACLES PER NEC 406.12(C).
- COORDINATE THE INSTALLATION OF ELECTRICAL RECEPTACLES WITH MILLWORK LOCATION, ARCHITECTURAL INTERIOR ELEVATIONS, ADA REQUIREMENTS, AND SURROUNDING FIELD CONDITIONS.
- ALL RESTROOM EXHAUST FANS SHALL BE INDEPENDENTLY SWITCHED FROM THE RESTROOM LIGHTING.

KEYED NOTES

- RECEPTACLE FOR POWER CONNECTION TO CEILING-MOUNTED PROJECTOR. COORDINATE EXACT LOCATION WITH OWNER PRIOR TO INSTALLATION.
- J-BOX FOR POWER CONNECTION TO THEATER SCREEN. COORDINATE EXACT LOCATION WITH OWNER PRIOR TO INSTALLATION.
- DATA CONNECTION TO CEILING-MOUNTED PROJECTOR. COORDINATE EXACT LOCATION WITH OWNER PRIOR TO INSTALLATION.
- PROVIDE NEMA 14-30R AND CIRCUIT OF 3#10, 1#10G, 3/4" C TO CIRCUIT NOTED FOR CONNECTION TO DRYER.
- ROUTE 1" C WITH PULLSTRING TO ELEC. ROOM.
- ROUTE 2-2" C UNDER SLAB TO DESK LOCATION.
- PROVIDE NEMA 14-50R AND CIRCUIT OF #8, #10G, 1" C TO CIRCUIT NOTED FOR CONNECTION TO OVEN/RANGE.
- J-BOX FOR POWER CONNECTION TO FRONT DOOR LOCK, DOOR STRIKE, AND FINGER PRINT DEVICE. COORDINATE EXACT EQUIPMENT REQUIREMENTS WITH OWNER PRIOR TO PURCHASE AND INSTALLATION.
- ROUTE 2-3" C WITH PULLSTRING TO PROPERTY LINE FOR TELEPHONE/CATV UTILITY SERVICE. COORDINATE EXACT ROUTING AND DEMARK POINT WITH SERVICE PROVIDERS.
- POWER FOR FUTURE SITE. WATER SYSTEM. COORDINATE WITH OWNER FOR FINAL LOCATION & REQUIREMENTS. FIELD VERIFY.
- OWNER TO PROVIDE FINAL FURNITURE LAYOUT AND CONFIRM ALL FLOOR OUTLET LOCATIONS PRIOR TO ROUGH-IN.
- FIRE ALARM CONTROL PANEL (FACP) MUST HAVE ITS OWN DEDICATED CIRCUIT BREAKER. IN ACCORDANCE WITH NFPA 10.6.5.2 AND NEC ARTICLE 760.41(b), THE BREAKER BRANCH CIRCUIT TO THE FIRE ALARM CONTROL PANEL AND POWER SUPPLIES SHALL BE LABELED IN RED "FIRE ALARM CIRCUIT".

COORDINATE WITH ALL MILLWORK (BUT NOT LIMITED TO) PRIOR TO LOCATING WALL SWITCHES AND RECEPTACLES.



1 POWER PLAN
1/8" = 1'-0"

REVISIONS AND ISSUANCE		
NO.	DATE	DESCRIPTION
1	04/01/2019	ARC PHASE 1

IVY KIDS EARLY LEARNING CENTER
 LOT COM2I
 CROSS CREEK RANCH
 6407 CROSS CREEK BEND LANE
 FULSHEAR, TX 77441

MEP Consultants
 BLK Engineering & Consulting Co.
 3423 Spring Arbor Ln.
 Sugar Land, TX 77479
 (t) 832 563 3127
 TBPE Firm #12672



DRAWING TITLE
ELECTRICAL POWER PLAN

DRAWN BY FK	CHECKED BY CK
DATE 04/17/2019	JOB NO. FULSHEAR
DRAWING NO. E-3.0	