

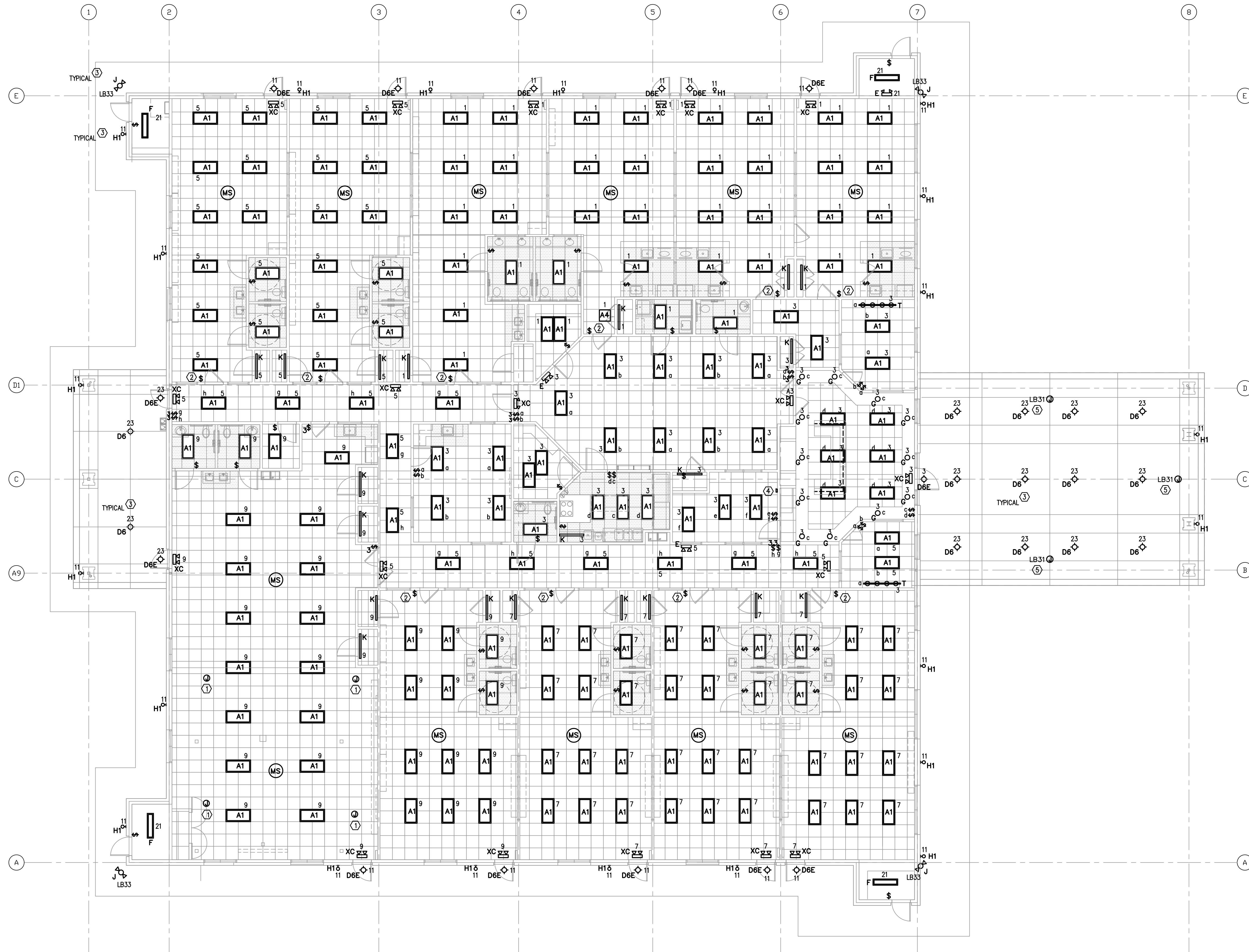
| REVISIONS AND ISSUANCE |            |             |
|------------------------|------------|-------------|
| NO.                    | DATE       | DESCRIPTION |
| 1                      | 04/01/2019 | ARC PHASE 1 |

**GENERAL NOTES**

- LIGHTING FIXTURE SUBSCRIPTS INDICATE FIXTURE TYPE, CONTROLLING SWITCH AND CIRCUIT NUMBER. IE:  
 $A_3^5$  A INDICATES FIXTURE TYPE.  
3 INDICATES CIRCUIT NO. 3, PANEL HA  
LB3 INDICATES CIRCUIT NO. 3, PANEL LB  
 $\square$  INDICATES CONTROLLING SWITCH
- REFER TO E5.0 FOR PANEL SCHEDULES. REFER TO E7.0 FOR LIGHT FIXTURE SCHEDULE.
- PROVIDE UNSWITCHED HOT LEG TO EMERGENCY BATTERY BACKUP SYSTEM.
- (MS) MOTION SENSOR FOR LOCAL ROOM. PASSIVE INFRARED AREA SENSOR; WATTSTOPPER C1-200 WITH 30 MINUTE TIME DELAY.
- MORE EXIT SIGNS AND EMERGENCY LIGHTING MAY BE REQUIRED AT FINALS.

**KEYED NOTES**

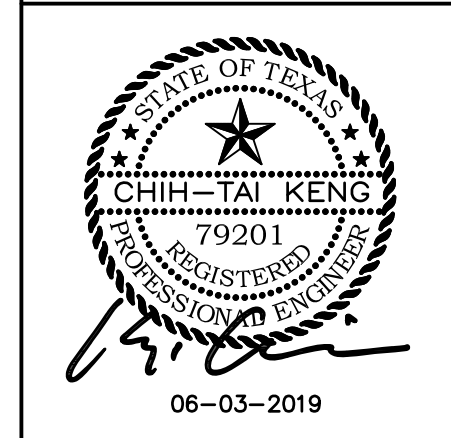
- LOCATION OF SURROUND SOUND SPEAKERS; COORDINATE EXACT LOCATION WITH OWNER PRIOR TO INSTALLATION.
- SWITCH SHALL BE KEYED LOW VOLTAGE, MOMENTARY CONTACT SWITCH (WATTSTOPPER LVS-1K OR PRIOR APPROVED EQUAL). SWITCH SHALL OPERATE AS MANUAL OVERRIDE TO CONNECTED OCCUPANCY SENSOR.
- ROUTE BRANCH CIRCUIT VIA LIGHTING CONTROLLER 'C1'. RE: LIGHTING CONTROLLER DIAGRAM E4.0.
- LIGHTING CONTROLLER OVERRIDE SWITCH.
- LOCATION OF SIGNAGE; COORDINATE EXACT LOCATION WITH OWNER PRIOR TO INSTALLATION.



1 LIGHTING PLAN  
1/8" = 1'-0"

**IVY KIDS EARLY LEARNING CENTER**  
LOT COM21  
CROSS CREEK RANCH  
6407 CROSS CREEK BEND LANE  
FULSHEAR, TX 77441

MEP Consultants  
BLK Engineering & Consulting Co.  
3423 Spring Arbor Ln.  
Sugar Land, TX 77479  
(281) 832-5633  
TXBPE Firm #12672



DRAWING TITLE  
**ELECTRICAL LIGHTING PLAN**

|                             |                     |
|-----------------------------|---------------------|
| DRAWN BY<br>FK              | CHECKED BY<br>CK    |
| DATE<br>04/17/2019          | JOB NO.<br>FULSHEAR |
| DRAWING NO.<br><b>E-2.0</b> |                     |