

REVISIONS AND ISSUANCE		
NO.	DATE	DESCRIPTION
1	04/01/2019	ARC PHASE 1

GENERAL NOTES

- REFER TO E4.0 FOR ONE LINE DIAGRAM, AND E5.0 FOR PANEL SCHEDULES.
- REFER TO E7.0 FOR GENERAL NOTES AND ELECTRICAL SPECIFICATIONS.
- SUBSCRIPT INDICATES CIRCUIT NUMBER, IE:
 ●HA3 HA3 INDICATES CIRCUIT NO. 3 PANEL 'HA'
- CONTRACTOR SHALL COORDINATE THE LOCATION OF PROPOSED TRANSFORMER POLE WITH LOCAL UTILITY COMPANY PRIOR TO START OF CONSTRUCTION.
- PROVIDE PULL WIRES IN SPARE CONDUITS.

KEYED NOTES

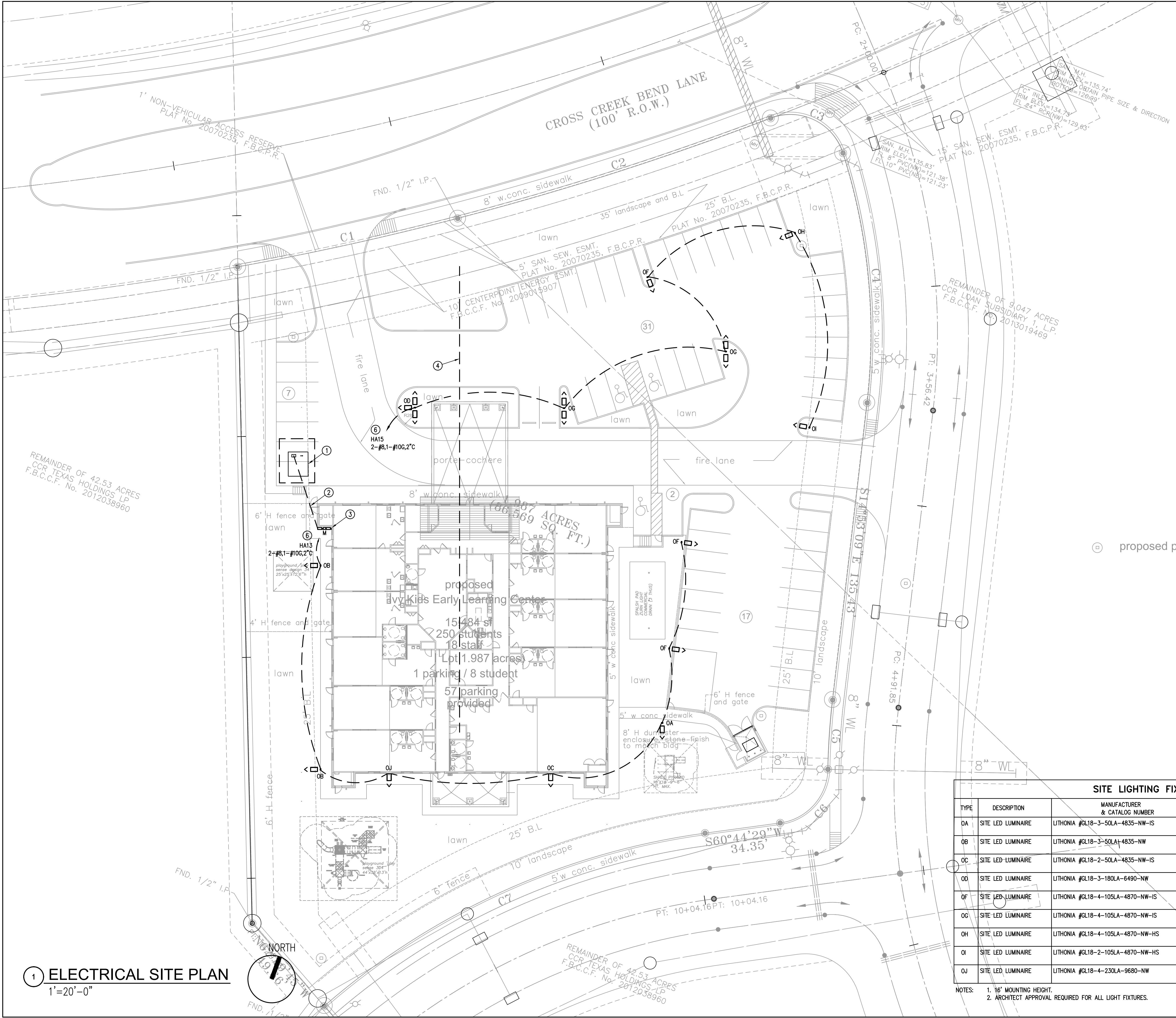
- PROVIDE NEW PAD-MOUNTED TRANSFORMER AND COORDINATE INSTALLATION AND SPECIFICATIONS WITH CENTERPOINT ENERGY.
- PROVIDE UNDERGROUND SERVICE ENTRANCE CONDUIT; RE: E4.0 FOR SIZES AND QUANTITIES.
- PROVIDE SERVICE DISCONNECTS, METER AND ASSOCIATED CONDUITS AND CONDUCTORS; RE: E4.0 FOR SIZES.
- PROVIDE TWO 3" SCHEDULE 40 PVC CONDUITS FOR COMMUNICATION CABLES WITH PULL WIRES TO TELEPHONE ROOM. COORDINATE LOCATIONS WITH PROVIDERS.
- PROVIDE TWO 120V BRANCH CIRCUITS AND 1-1/2" EMPTY CONDUIT WITH PULL WIRE FOR COMMUNICATION TO DIGITAL SIGN.
- ROUTE LIGHTING BRANCH CIRCUITS VIA LIGHTING CONTROLLER 'C1'; RE: LIGHTING CONTROLLER DIAGRAM 02/E4.0 FOR DETAILS.

IVY KIDS EARLY LEARNING CENTER
 LOT COM2I
 CROSS CREEK RANCH
 6407 CROSS CREEK BEND LANE
 FULSHEAR, TX 77441

MEP Consultants
 BLK Engineering & Consulting Co.
 3423 Spring Arbor Ln.
 Sugar Land, TX 77479
 (t) 832 563 3127
 TBPE Firm #12672



DRAWING TITLE
ELECTRICAL SITE PLAN
 DRAWN BY: FK
 CHECKED BY: CK
 DATE: 04/17/2019
 JOB NO.: FULSHEAR
 DRAWING NO.: **E-1.0**



⊙ proposed parking lot light

SITE LIGHTING FIXTURE SCHEDULE							
TYPE	DESCRIPTION	MANUFACTURER & CATALOG NUMBER	VOLTAGE	LAMPS	MOUNTING	WATTAGE	REMARKS
OA	SITE LED LUMINAIRE	LITHONIA #GL18-3-50LA-4835-NW-IS	MVOLT	LED	POLE	50	1,2
OB	SITE LED LUMINAIRE	LITHONIA #GL18-3-50LA-4835-NW	MVOLT	LED	POLE	50	1,2
OC	SITE LED LUMINAIRE	LITHONIA #GL18-2-50LA-4835-NW-IS	MVOLT	LED	POLE	50	1,2
OD	SITE LED LUMINAIRE	LITHONIA #GL18-3-180LA-6490-NW	MVOLT	LED	POLE	180	1,2
OF	SITE LED LUMINAIRE	LITHONIA #GL18-4-105LA-4870-NW-IS	MVOLT	LED	POLE	105	1,2
OG	SITE LED LUMINAIRE	LITHONIA #GL18-4-105LA-4870-NW-IS	MVOLT	LED	POLE	105	1,2
OH	SITE LED LUMINAIRE	LITHONIA #GL18-4-105LA-4870-NW-HS	MVOLT	LED	POLE	105	1,2
OI	SITE LED LUMINAIRE	LITHONIA #GL18-2-105LA-4870-NW-HS	MVOLT	LED	POLE	105	1,2
OJ	SITE LED LUMINAIRE	LITHONIA #GL18-4-230LA-9680-NW	MVOLT	LED	POLE	230	1,2

NOTES:
 1. 16' MOUNTING HEIGHT.
 2. ARCHITECT APPROVAL REQUIRED FOR ALL LIGHT FIXTURES.

1 ELECTRICAL SITE PLAN
 1"=20'-0"

