

REVISIONS AND ISSUANCE		
NO.	DATE	DESCRIPTION

IVY KIDS EARLY LEARNING CENTER
 LOT COM21
 CROSS CREEK RANCH
 6407 CROSS CREEK BEND LANE
 FULSHEAR, Tx 77441

MISSION ENGINEERING INC.
 10370 RICHMOND AVE, #560
 HOUSTON, TEXAS 77042
 [T] 713-981-0018
 [E] dzhuang@missioneng.com
 TPEF Registration No. F-11771

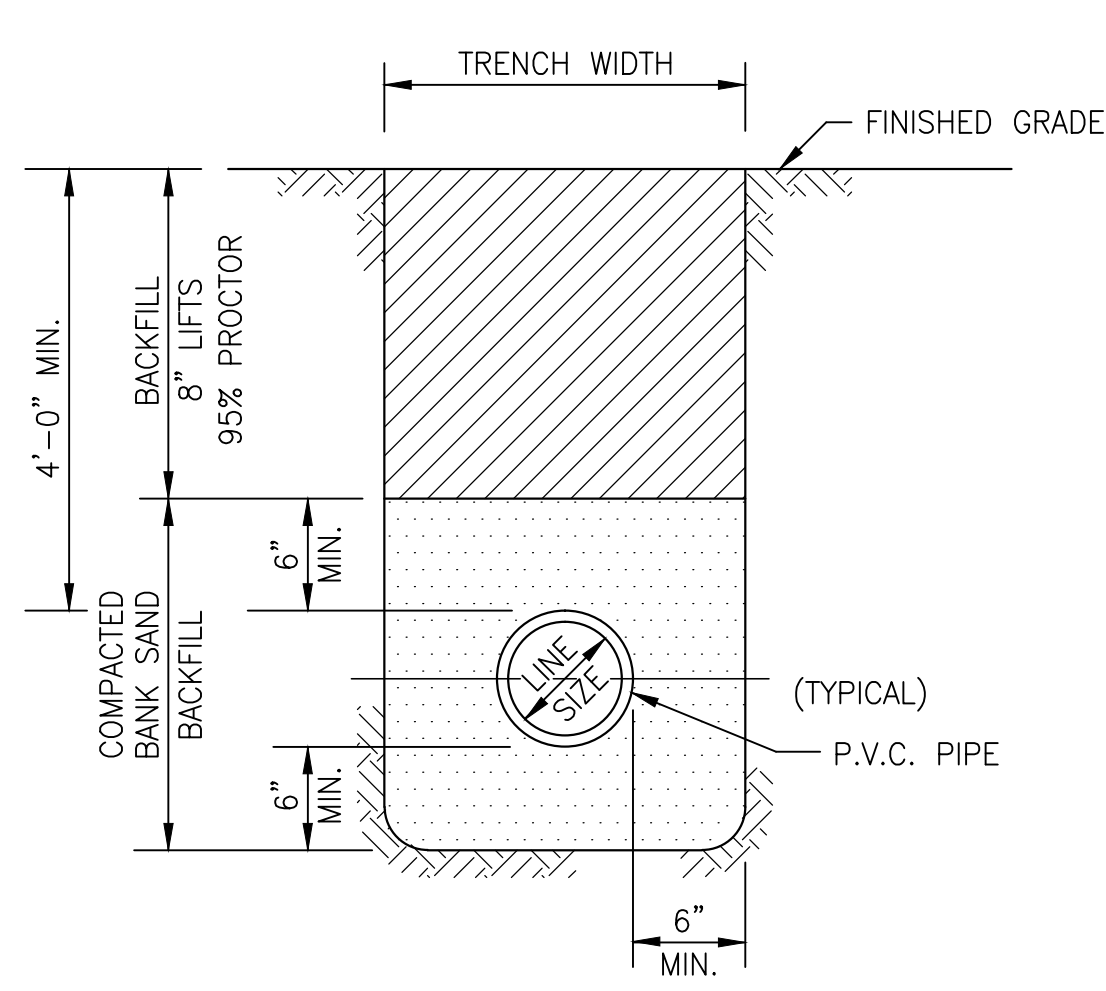


06/21/2019

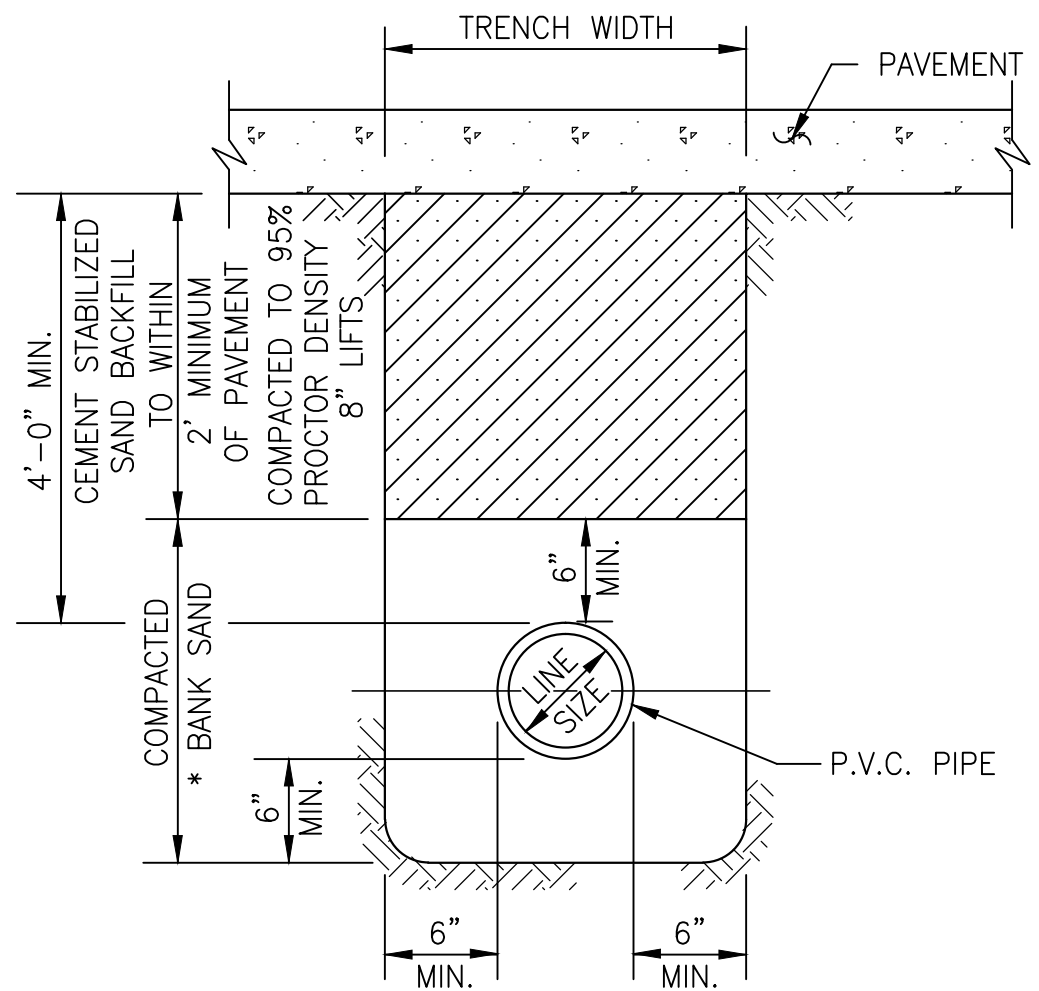
DRAWING TITLE
DETAILS

DRAWN BY	CHECKED BY
	EL
DATE	JOB NO.
06/21/2019	1903081

DRAWING NO.
C7

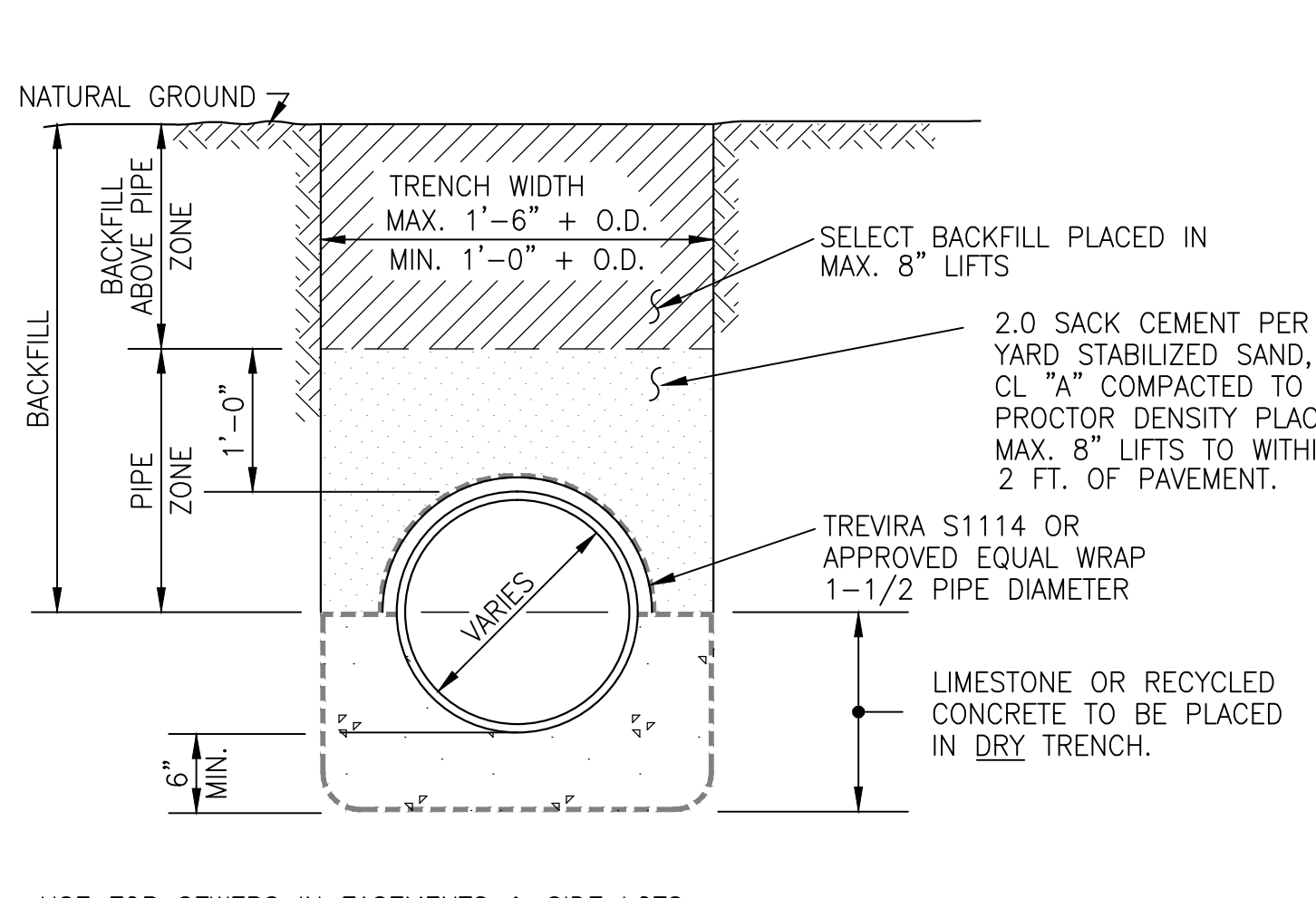


P.V.C. PIPE BEDDING & BACKFILL
N.T.S.



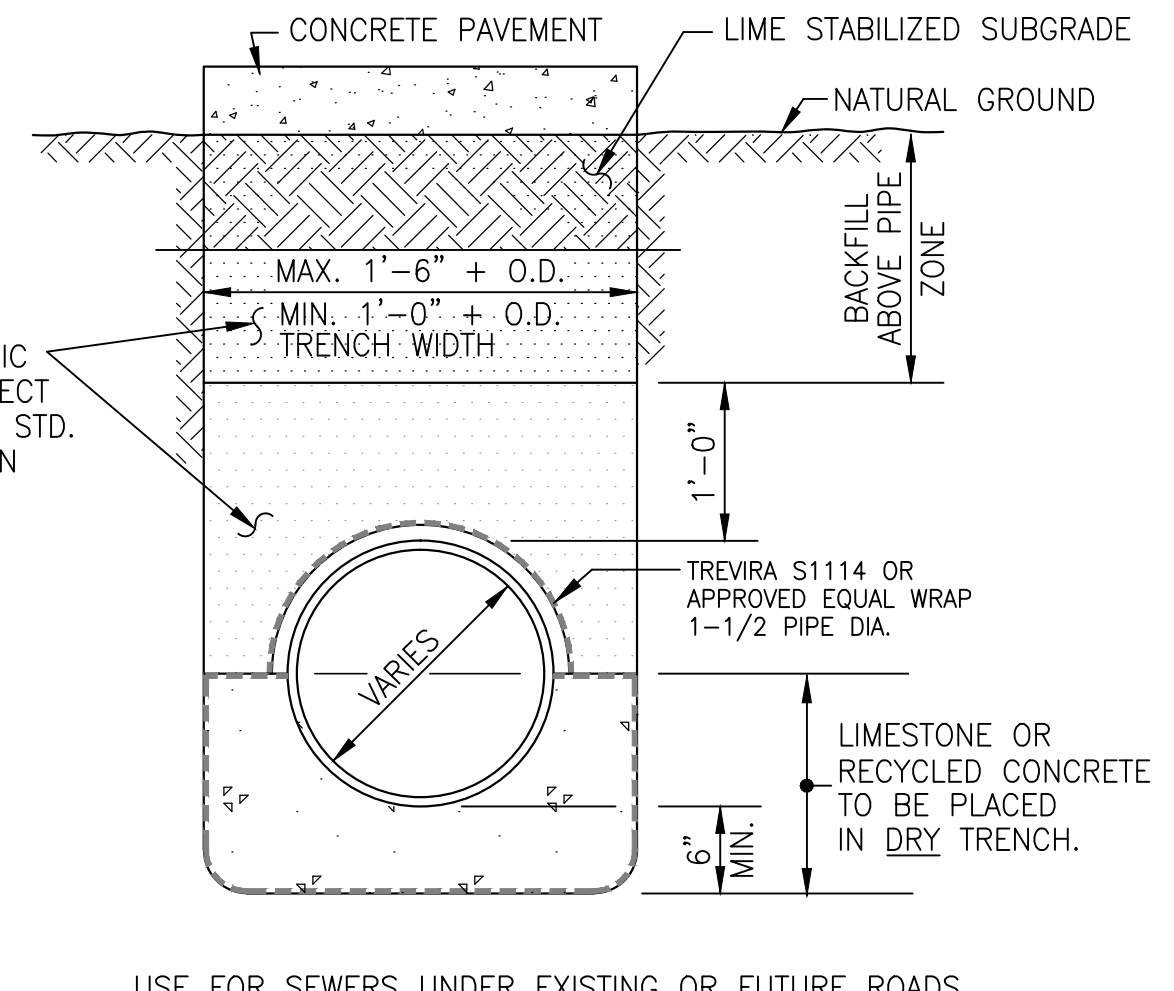
P.V.C. PIPE BEDDING & BACKFILL
PAVING DETAIL CLASS "A-A"
N.T.S.

* SEE C.S.S. AND BANK SAND NOTES



MODIFIED "A"
N.T.S.

USE FOR SEWERS IN EASEMENTS & SIDE LOTS NOT UNDER EXISTING OR FUTURE ROADS, STREETS, OR DRIVEWAYS.



MODIFIED "A-A"
N.T.S.

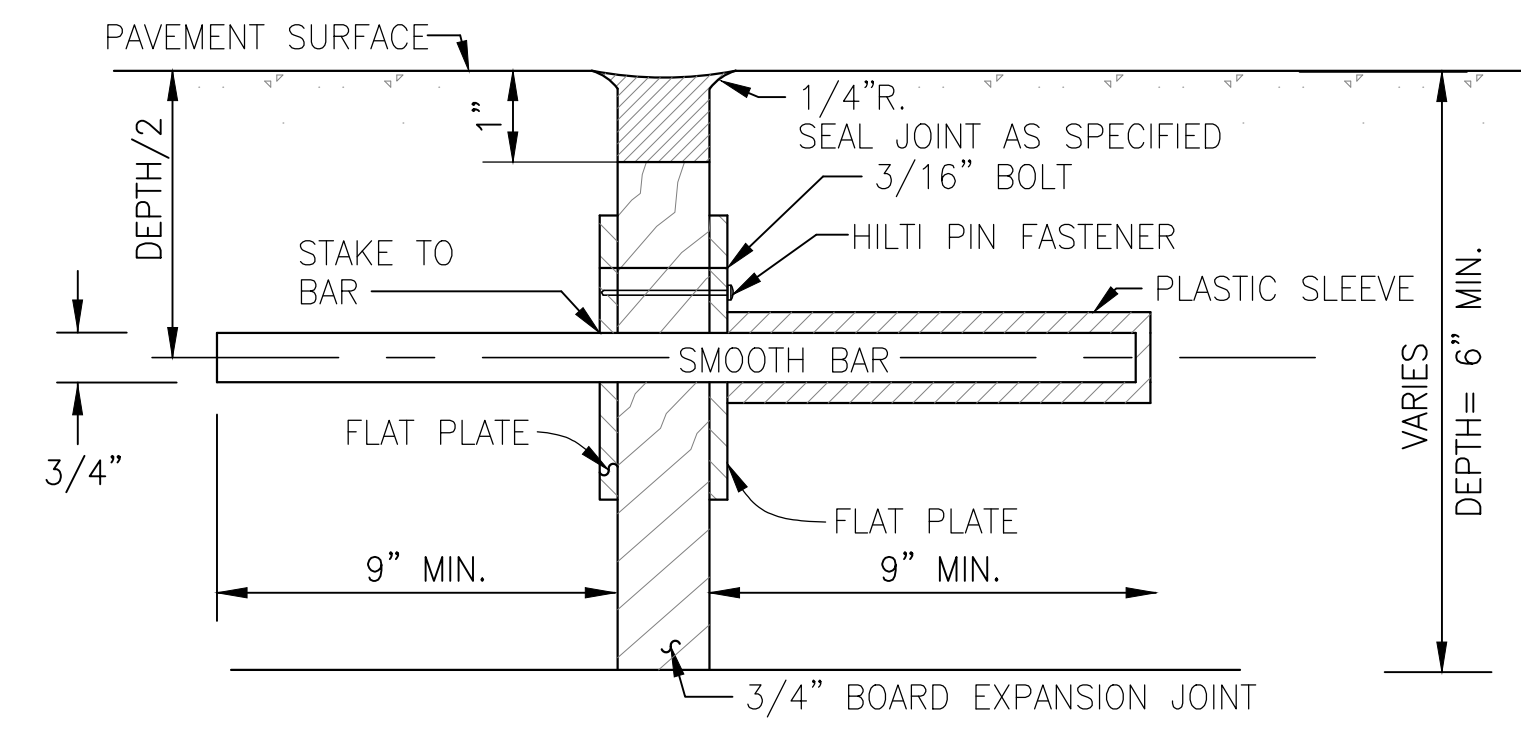
USE FOR SEWERS UNDER EXISTING OR FUTURE ROADS STREETS OR DRIVEWAYS.

SANITARY FORCE MAIN & WATER LINE BEDDING AND BACKFILL

GRAVITY SEWER BEDDING AND BACKFILL

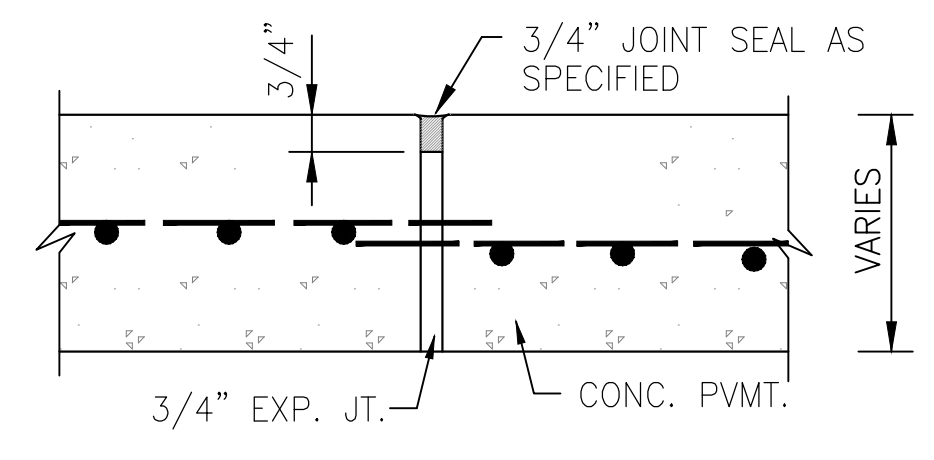
CONSTRUCTION NOTES

- CONTRACTOR SHALL CONTACT ENGINEER IMMEDIATELY IF WET SAND CONDITIONS ARE ENCOUNTERED.
- LIMESTONE AND RECYCLED CONCRETE DIMENSIONS SHOWN ARE TYPICAL BUT MAY BE VARIED BY ORDER OF ENGINEER.
- LIMESTONE OR RECYCLED CONCRETE SHALL BE IN ACCORDANCE WITH TXDOT SPECIFICATION No. 248 FLEXIBLE BASE, TYPE A, GRADE 2 AGGREGATE.
- NO BEDDING SHALL BE INSTALLED IN WET CONDITIONS. WHEN WELL POINTING OR IN WET SAND CONDITIONS, MAINTAIN GROUND WATER 1 (FT) BELOW BOTTOM OF TRENCH FOR A MINIMUM OF 24-HRS AFTER BEDDING AND BACKFILL IS IN PLACE.
- ALL MATERIALS SHALL BE FROM THE APPROVED PRODUCTS LIST UNLESS SPECIFICALLY APPROVED BY ENGINEER.
- SANITARY SEWER BEDDING FOR WET SAND CONDITIONS SHALL BE AS PER MODIFIED "A" OR "A-A".
- ALL SAND BEDDING FOR WATER LINES SHALL BE CLEAN, MECHANICALLY COMPACTED BANK SAND.

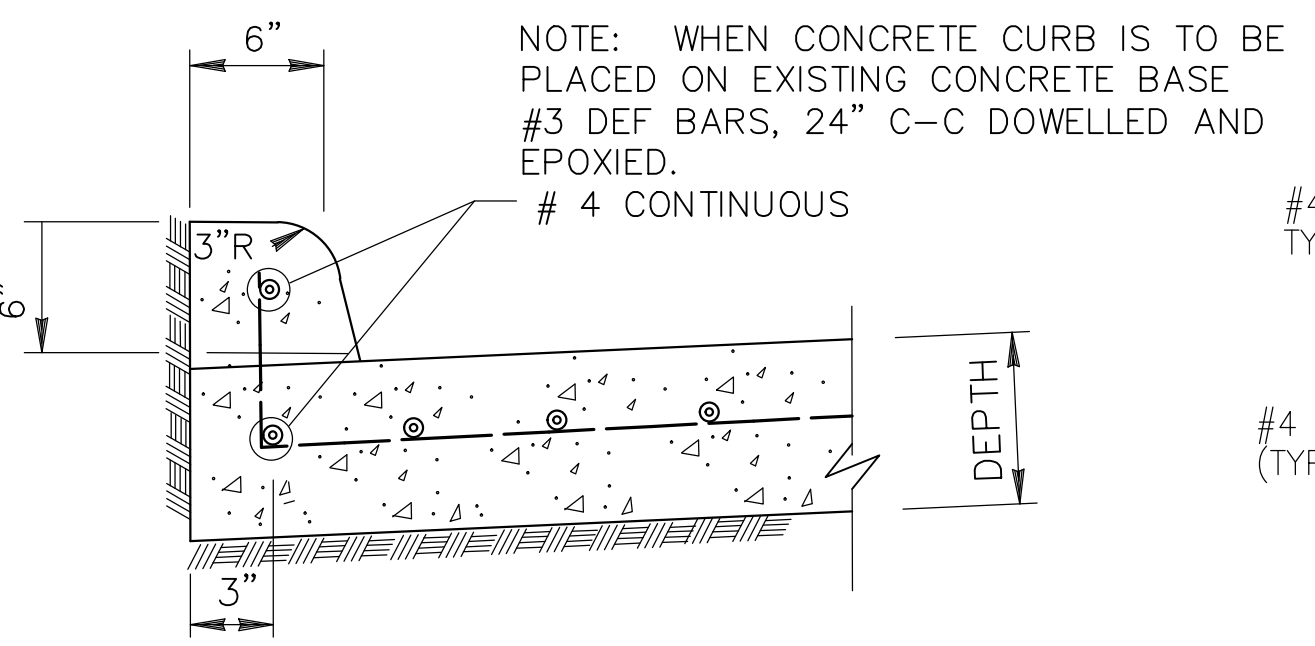


DOWEL TYPE EXPANSION JOINT
N.T.S.

STEEL TO MEET ASTM STD. SPEC. FOR CONC. REBAR UNIT TO BE 24" C.-C., AND 10" MIN.



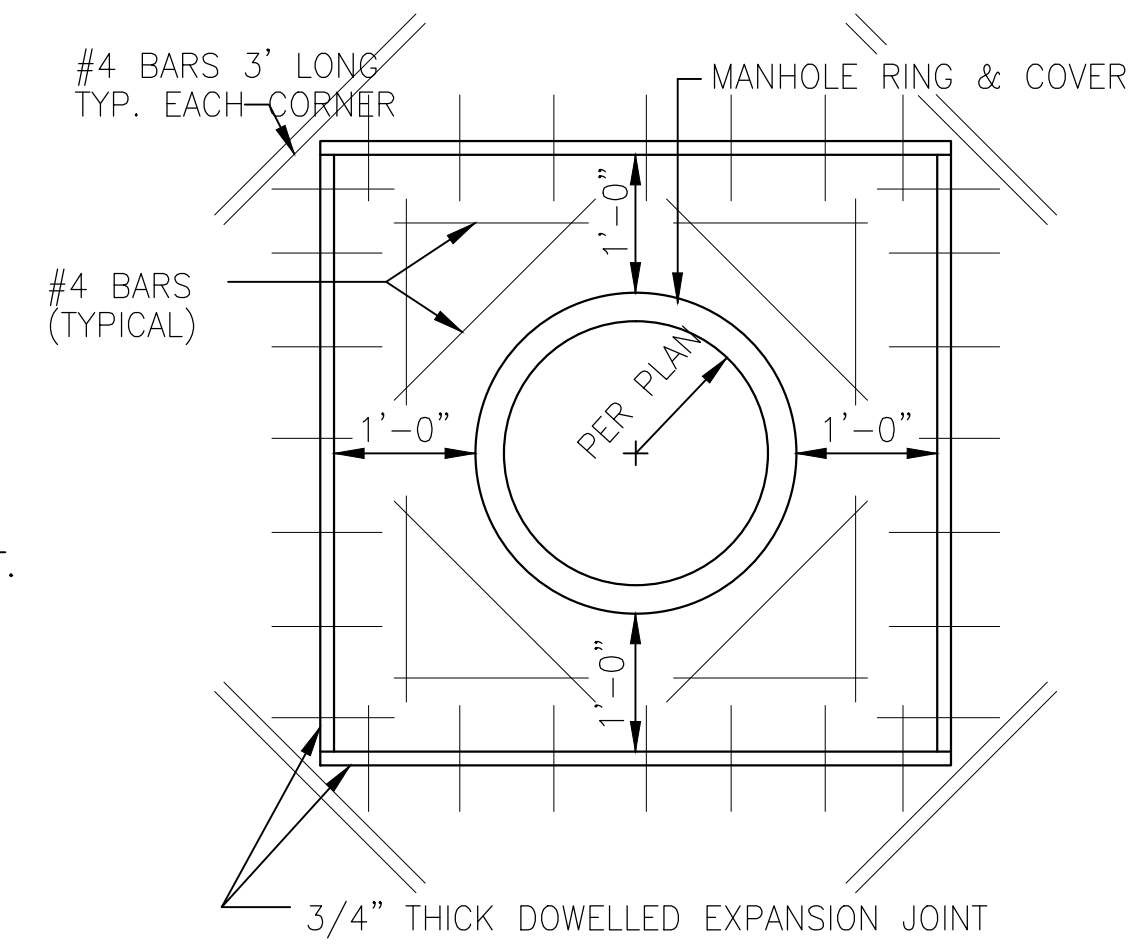
CONSTRUCTION JOINT SEAL
N.T.S.



CONCRETE CURB
N.T.S.

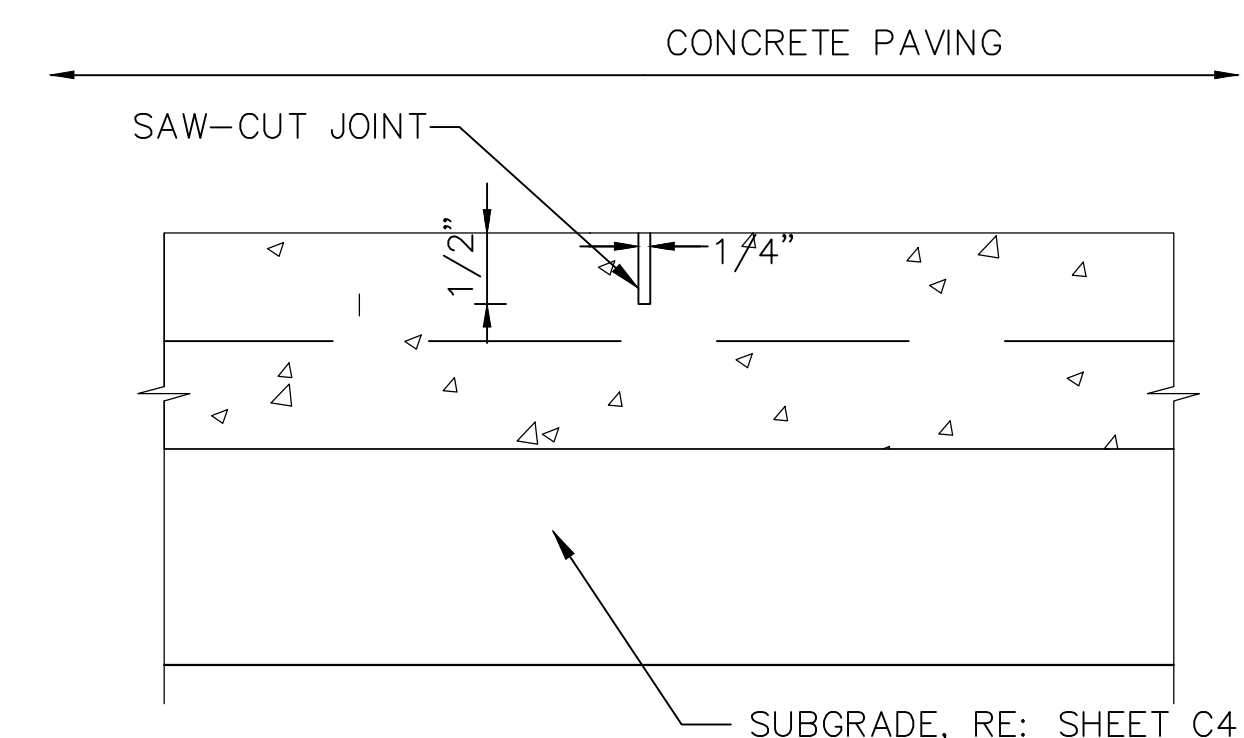
NOTE: WHEN CONCRETE CURB IS TO BE PLACED ON EXISTING CONCRETE BASE #3 DEF BARS, 24" C-C DOWELLED AND EPOXIED.
#4 CONTINUOUS
* REDWOOD CURB EARS SHALL BE PLACED AT ALL TRANSVERSE JOINTS IN PAVEMENT.

NOTE: ALL NEW CURB REQUIRES 3,000 P.S.I. @ 28-DAYS, AND A MINIMUM OF 1-LB/CY OF APPROVED POLYROYLENE FIBER MESH.

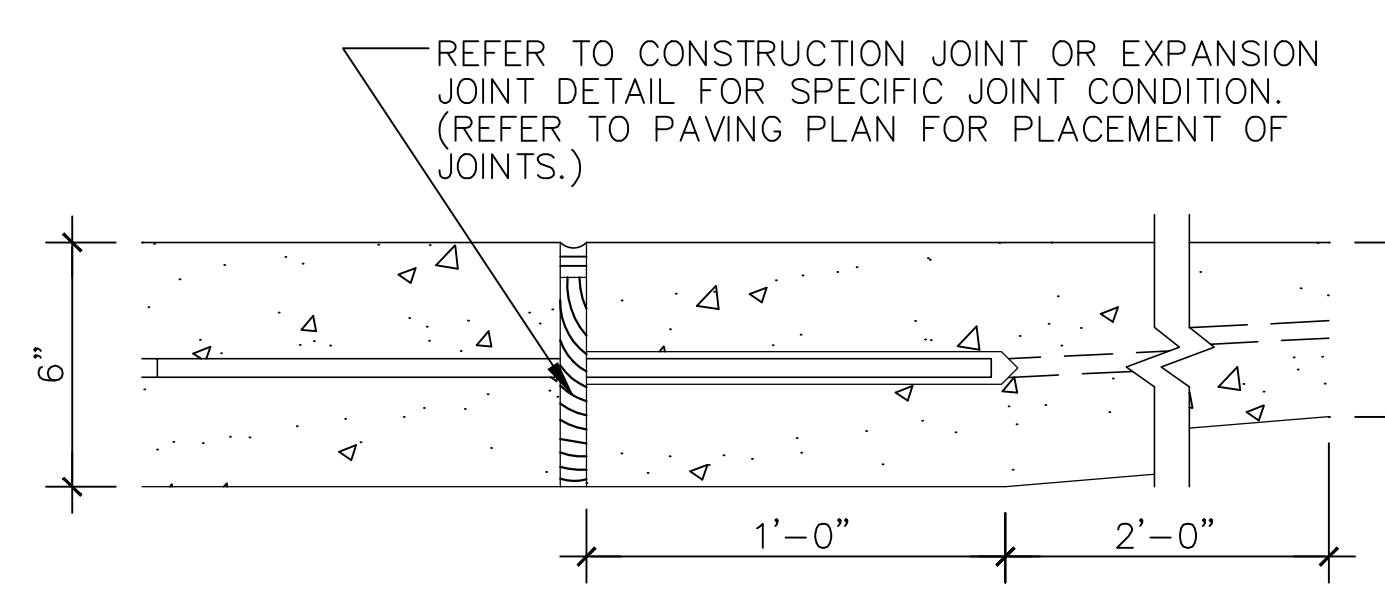


MANHOLE BLOCKOUT
N.T.S.
(STORM & SANITARY) IN PAVEMENT

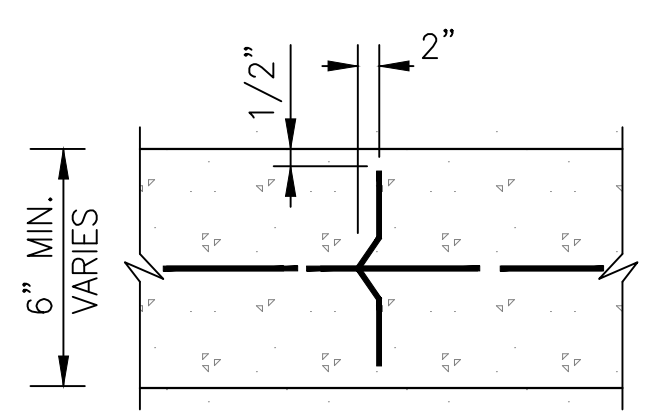
NOTE: ALL EXPANSION AND CONSTRUCTION JOINTS SHOULD MEET THE CURB AT A RIGHT ANGLE AND CONTINUE THROUGH THE CURB.



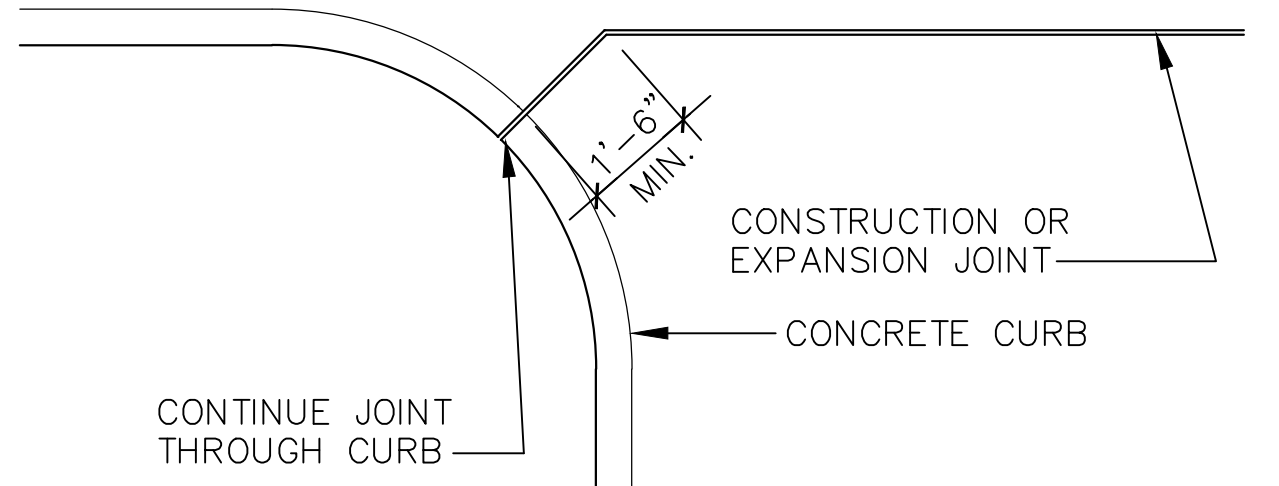
CONTROL JOINT
N.T.S.



THICKNESS TRANSITION
SCALE: N.T.S.



DEFORMED METAL STRIP
N.T.S.



JOINT AND CURB RADIUS
N.T.S.

CONTINUE JOINT THROUGH CURB