

REVISIONS AND ISSUANCE		
NO.	DATE	DESCRIPTION
1	04152019	PRICING
2	06202019	PERMIT

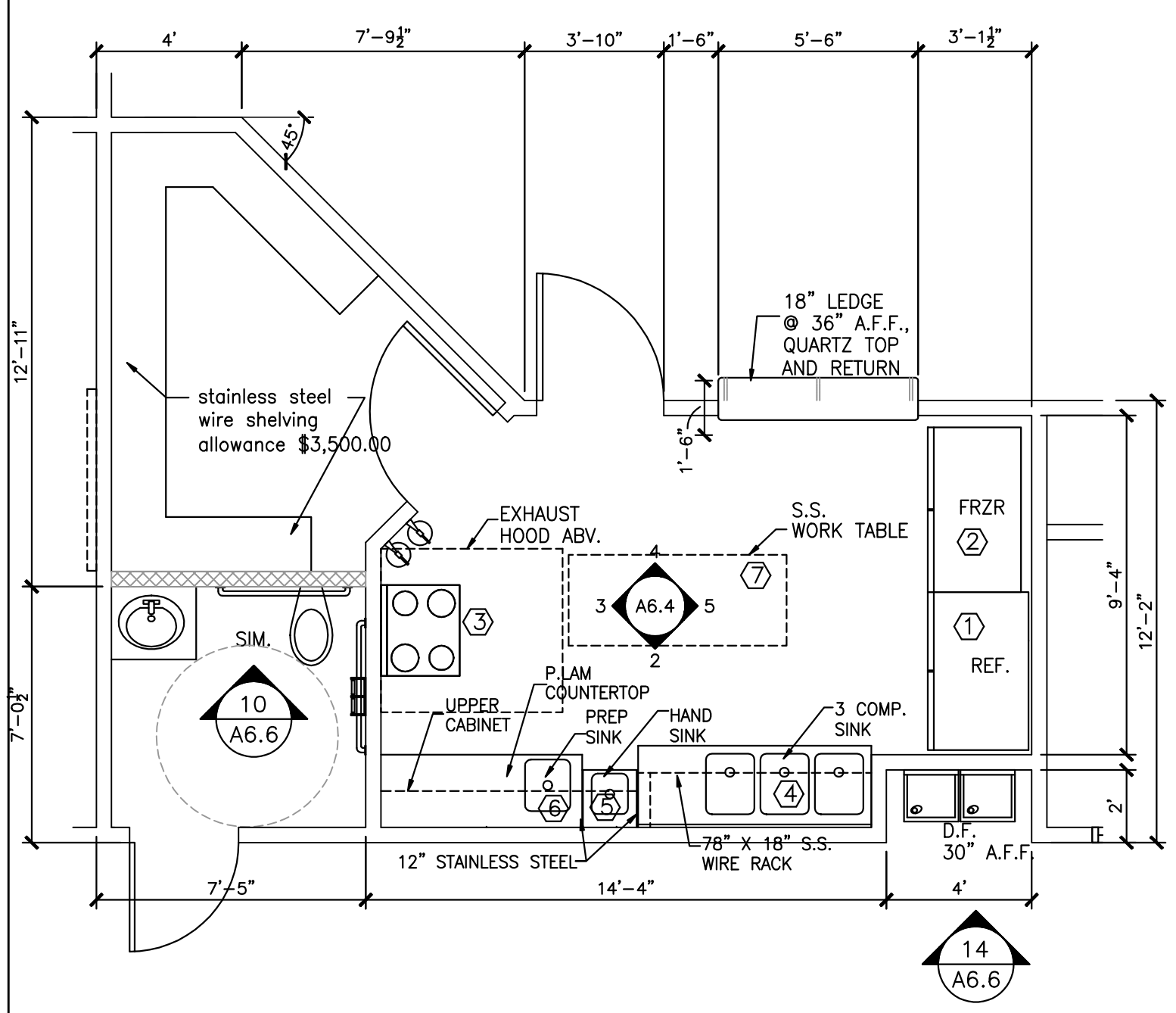
**IVY KIDS EARLY LEARNING CENTER**  
**LOT COM2I**  
**CROSS CREEK RANCH**  
**6407 CROSS CREEK BEND LANE**  
**FULSHEAR, TX 77441**



DRAWING TITLE	
<b>ENLARGED FLOOR PLANS</b>	
DRAWN BY	CHECKED BY
DATE	JOB NO.
DRAWING NO.	

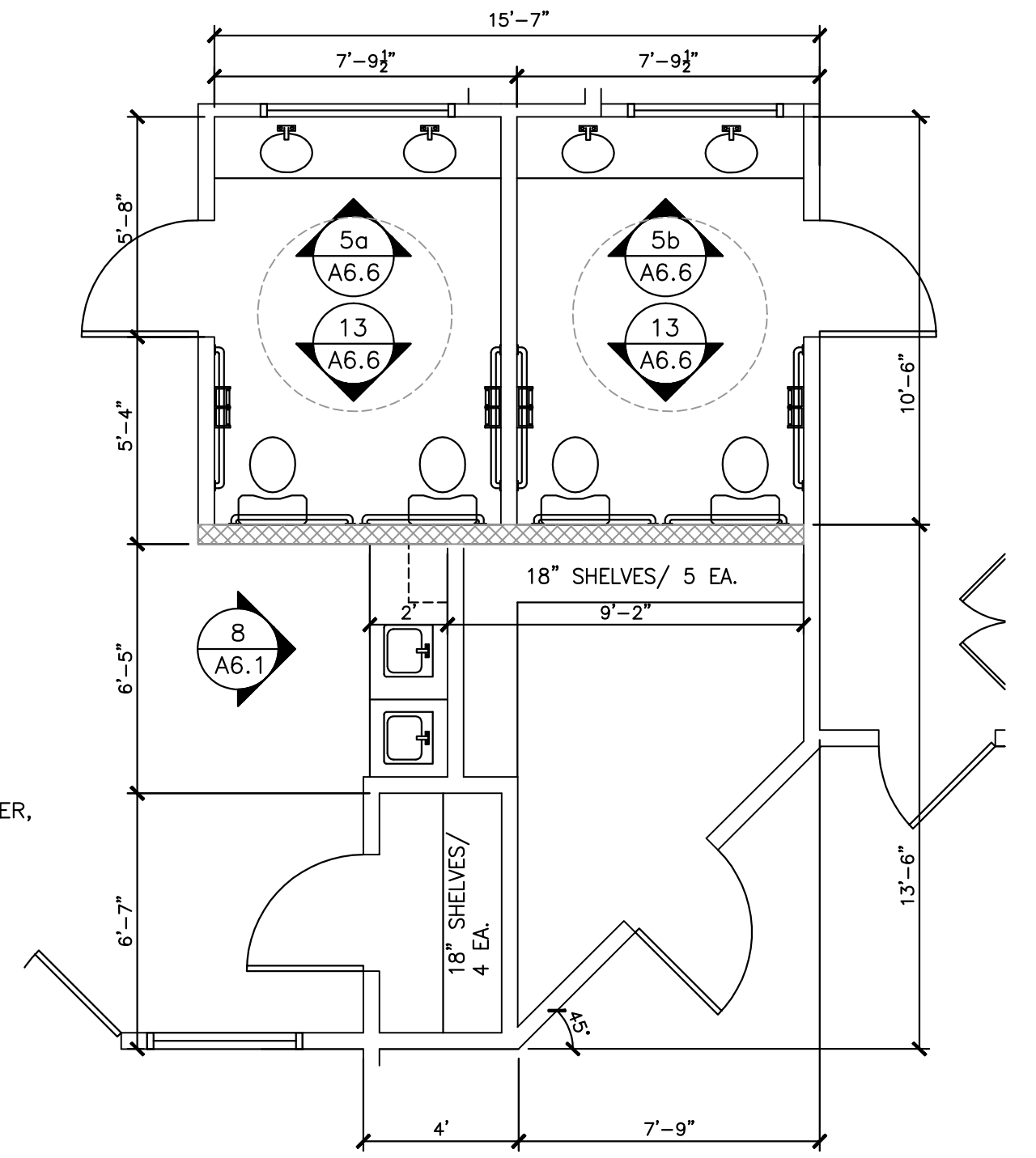
**A-2.3**

- ① REFRIGERATOR AVATCO SS-2R-HC 54" REACH - IN
- ② FREEZER TURBO AIR, TSF-49SD
- ③ RANGE VULCAN, GAS RANGE, MODEL #36LC
- ④ 3 COMP. SINK STAINLES STEEL 18"x18"x14" with internal round corner  
PROVIDE 12" S.S. SPLASH GUARD
- ⑤ PREP SINK STAINLES STEEL
- ⑥ HAND SINK STAINLES STEEL
- ⑦ WORK TABLE STAINLES STEEL - 72" X 30" 14 GA, W/ ROUND CORNER

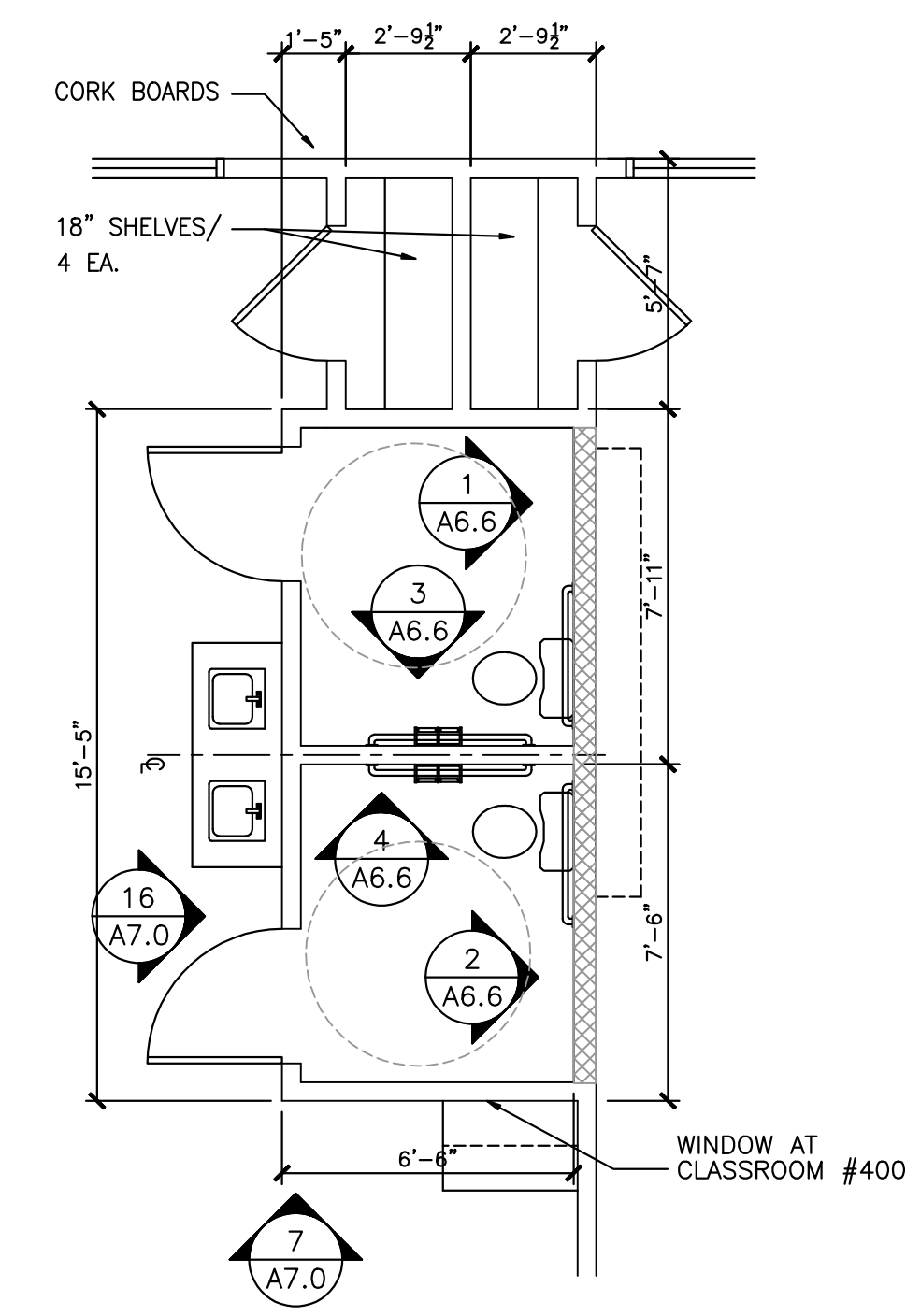


**1 KITCHEN PLAN-ENLARGED**  
 1/4" = 1'-0"

NOTE:  
 1. HAND SINK SHALL BE PROVIDED WITH A SOAP DISPENSER, PAPER TOWEL HOLDER AND TRASH RECEPTACLE.

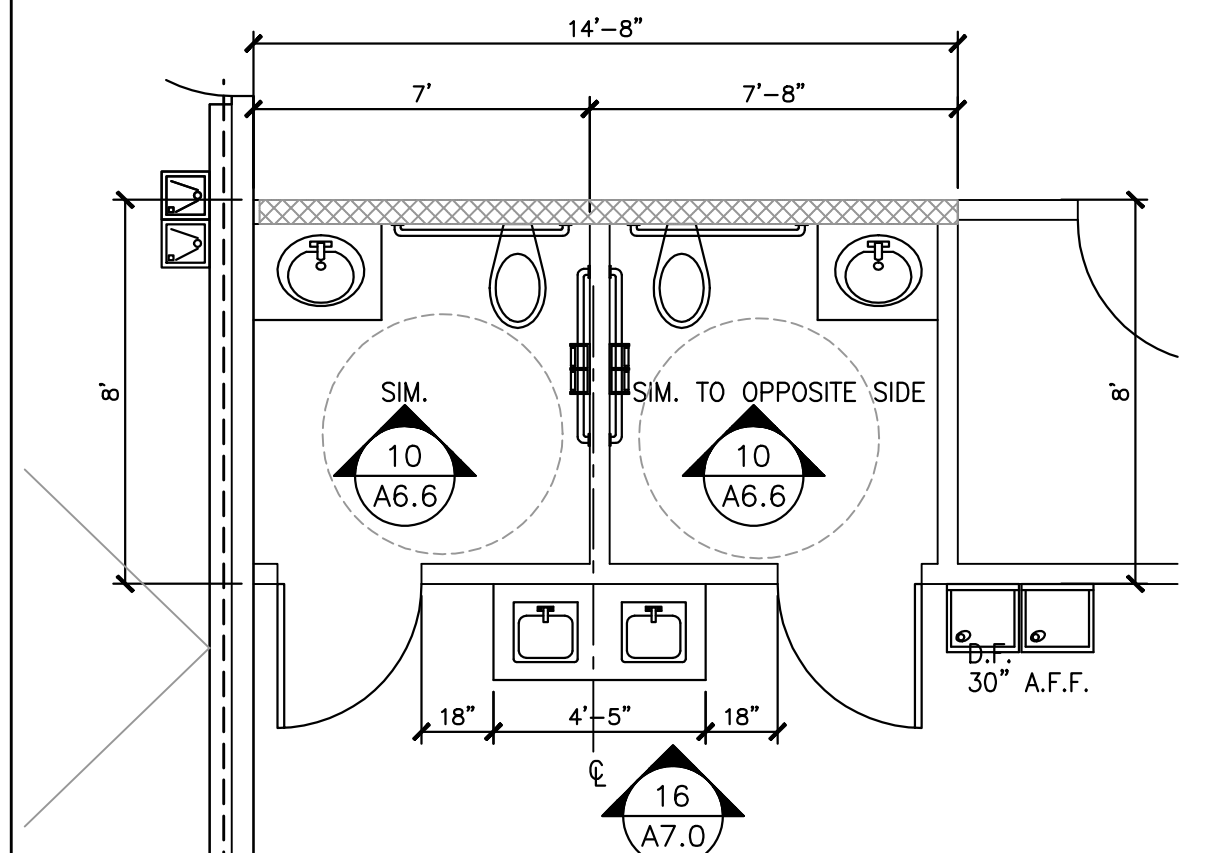


**RESTROOM PLAN-ENLARGED**  
 1/4" = 1'-0"

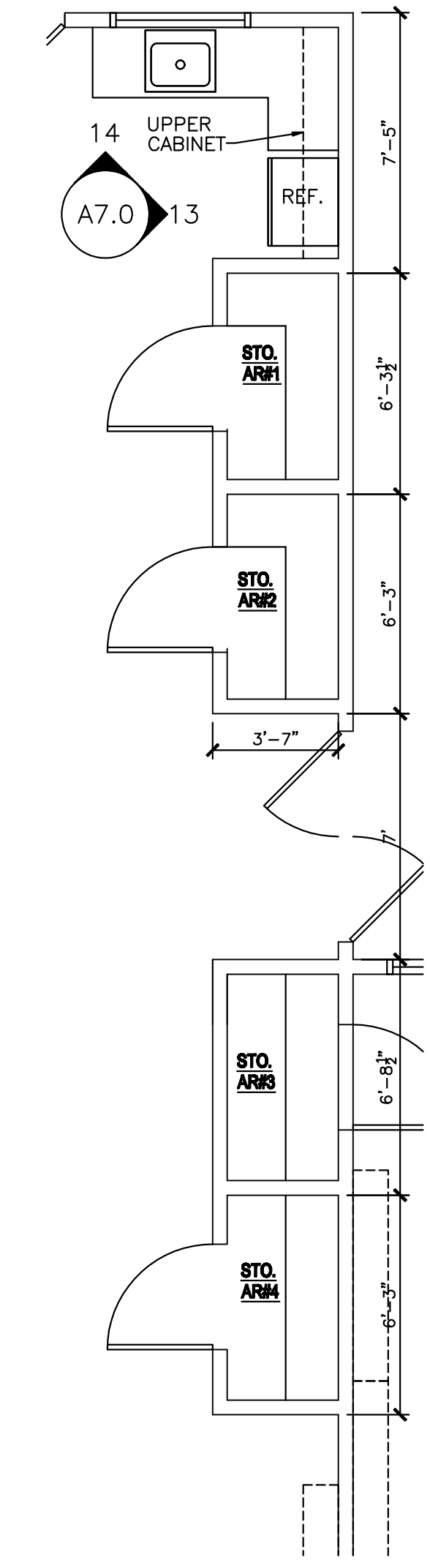


**6 RESTROOM PLAN-ENLARGED**  
 1/4" = 1'-0"

CLASSROOM #400-SIM.  
 CLASSROOM #450  
 CLASSROOM #500  
 CLASSROOM #550-OPP. HD.

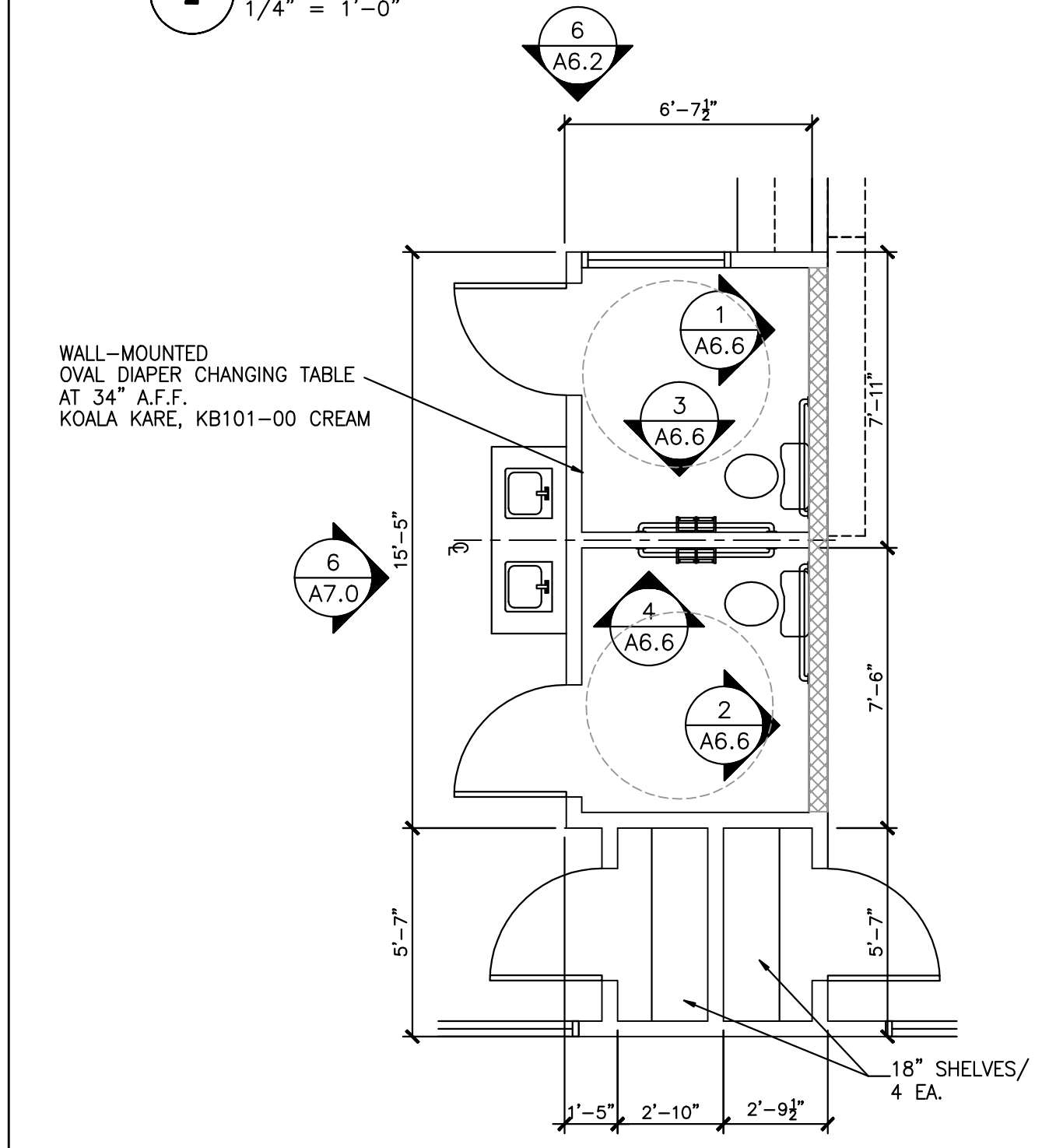


**2 RESTROOM PLAN @ ACTIVITY-ENLARGED**  
 1/4" = 1'-0"



**8 ACTIVITY ROOM COUNTER PLAN-ENLARGED**  
 1/4" = 1'-0"

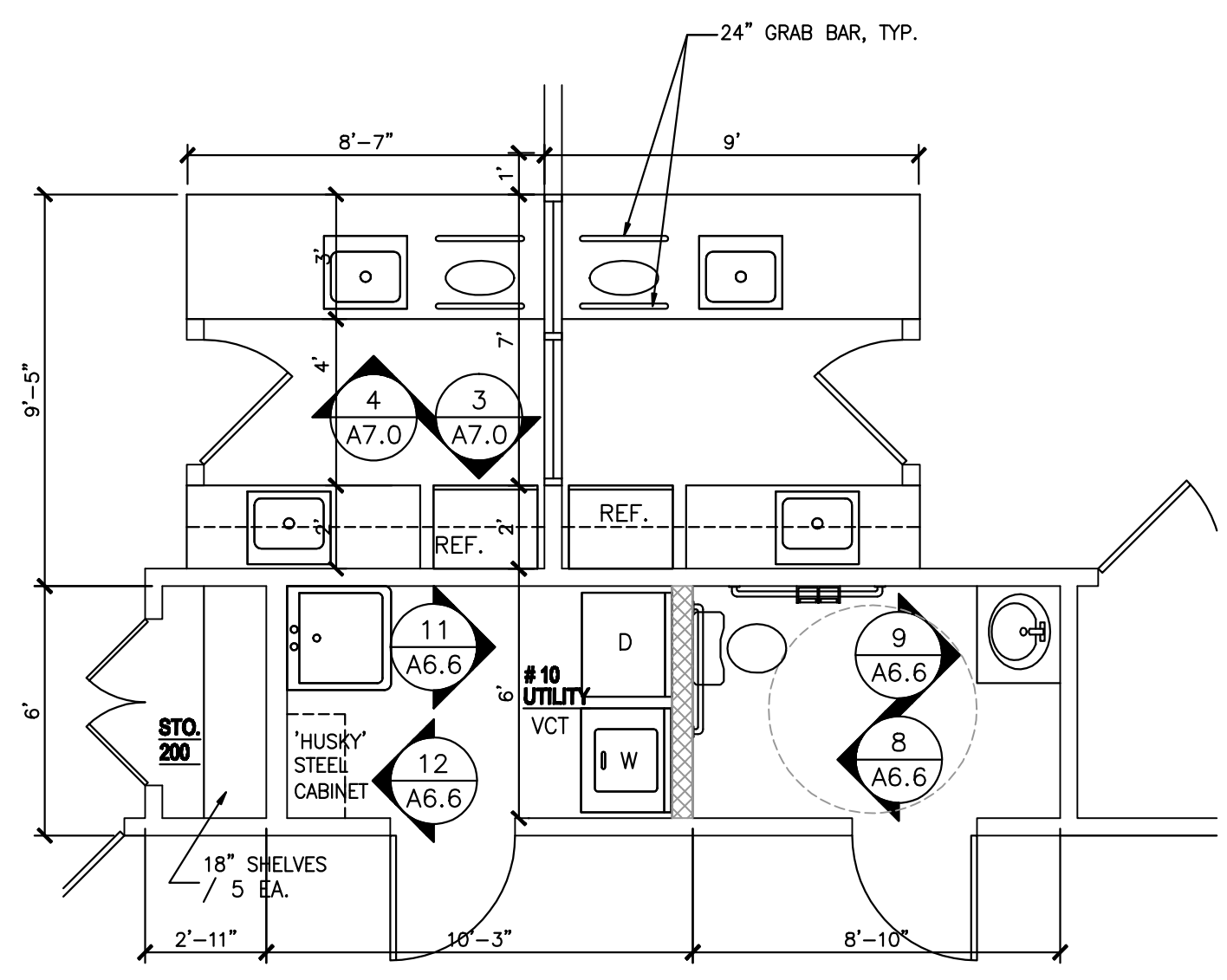
GENERAL NOTE:  
 ALL BATHROOMS TO BE SLOPED TO FLOOR DRAIN. (SEE:P-1)



**3 RESTROOM PLAN-ENLARGED**  
 1/4" = 1'-0"

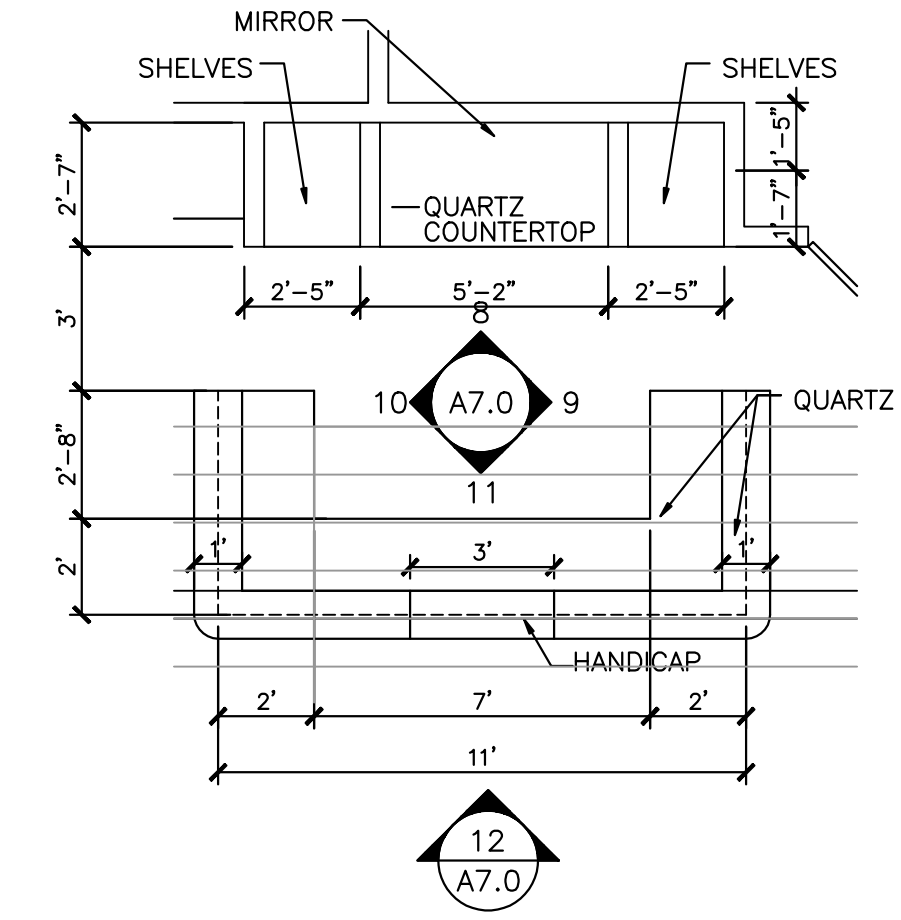
CLASSROOM #300  
 CLASSROOM #350

NOTE:  
 1. PROVIDE BLOCKING FOR CHANGING TABLE.



**5 UTILITY/RESTROOM PLAN-ENLARGED**  
 1/4" = 1'-0"

CLASSROOM #150-KITCHEN  
 CLASSROOM #200-KITCHEN



**7 RECEPTION AREA PLAN-ENLARGED**  
 1/4" = 1'-0"